



# GMT MONTHLY MEMBERSHIP PROGRESS REPORT

Results as of: 2/28/2019

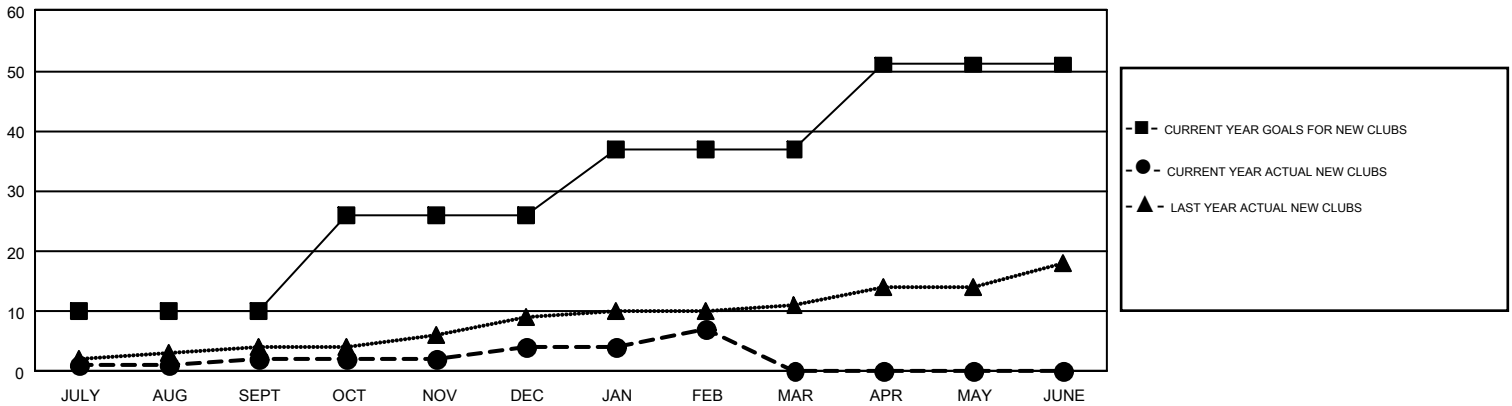
## GMT Constitutional Area 1, Group E

GMT: CARLTON LLOYD

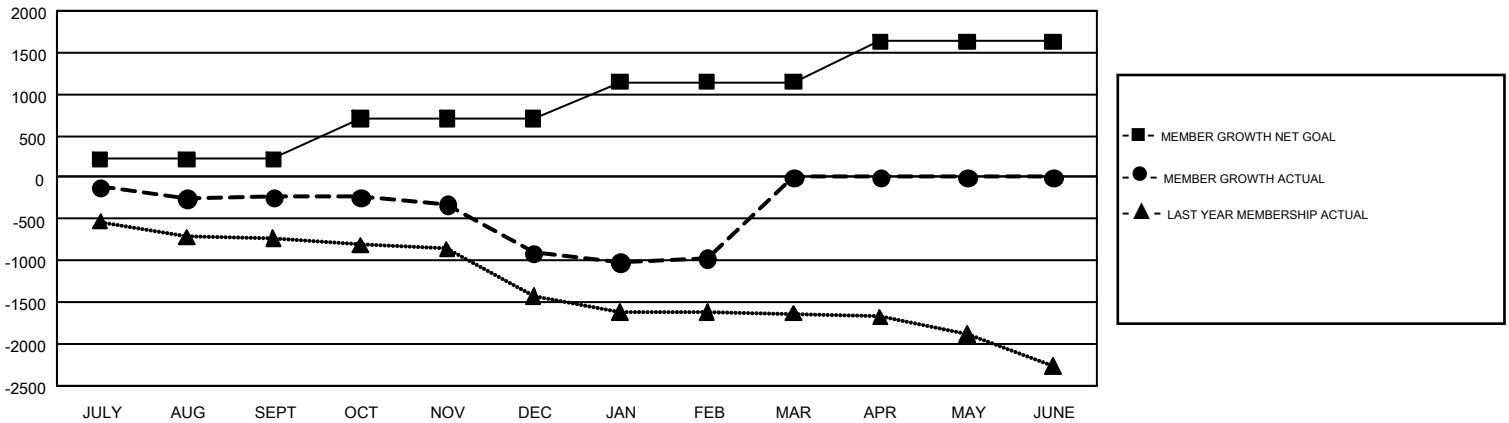
REPORT DOES NOT INCLUDE CLUBS IN UNDISTRICTED AREAS.

Clubs				Members			
RESULTS FOR 2018-2019				RESULTS FOR 2018-2019			
QUARTER	NEW CLUB GOAL	NEW CLUBS	DROPPED CLUBS	QUARTER	MEMBER GROWTH NET GOAL	MEMBER GROWTH ACTUAL	DROPPED MEMBERS ACTUAL (including transfers)
JULY/AUG/SEPT	10	2	17	JULY/AUG/SEPT	216	941	1,001
OCT/NOV/DEC	16	2	19	OCT/NOV/DEC	494	963	1,511
JAN/FEB/MAR	11	3	3	JAN/FEB/MAR	434	712	701
APR/MAY/JUNE	14	0	0	APR/MAY/JUNE	489	0	0

GOALS AND ACTUAL NEW CLUBS CUMULATIVE



GOALS AND ACTUAL MEMBERS CUMULATIVE



DROPPED CLUBS: 39	715 CLUBS OF 1,540 ADDED 1 OR MORE NEW MEMBERS	<u>GENDER DISTRIBUTION</u>	
<u>DROPPED MEMBERS</u>		MALE	22,622 (63.21%)
DECEASED	395	FEMALE	13,168 (36.79%)
CLUB CANCELLED	234	TOTAL FAMILY UNIT MEMBERS	
OTHER	2,584	6,752	
TOTAL	3,213	FAMILY MEMBERS PAYING HALF DUES	
		3,461	

[CLICK HERE FOR CUMULATIVE MEMBERSHIP DATA](#)